



SACRAMENTO - SAN JOAQUIN

**DELTA** CONSERVANCY

*A California State Agency*

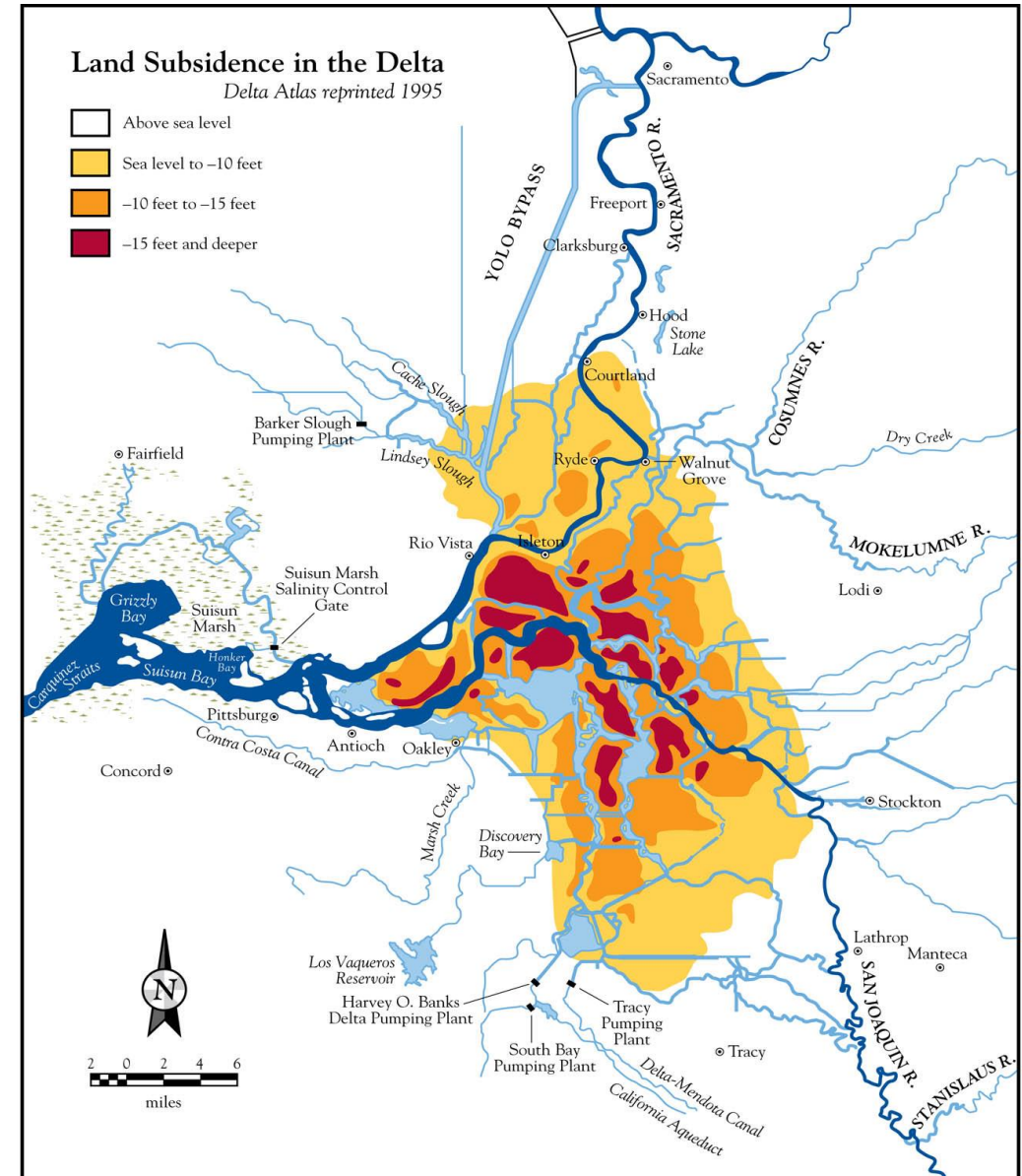
# Delta Carbon Management Overview and Update

[campbell.ingram@deltaconservancy.ca.gov](mailto:campbell.ingram@deltaconservancy.ca.gov)



# Subsidence and Risks

- Subsidence continues at rates ranging from about 0.5 to 1.5 inches per year
- Sea levels are rising at a rate of about 0.3 inch per year

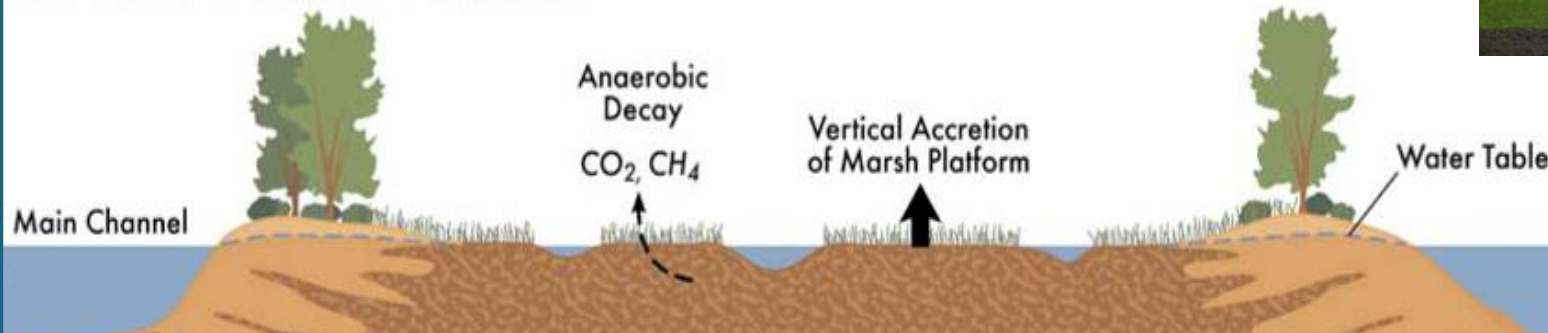




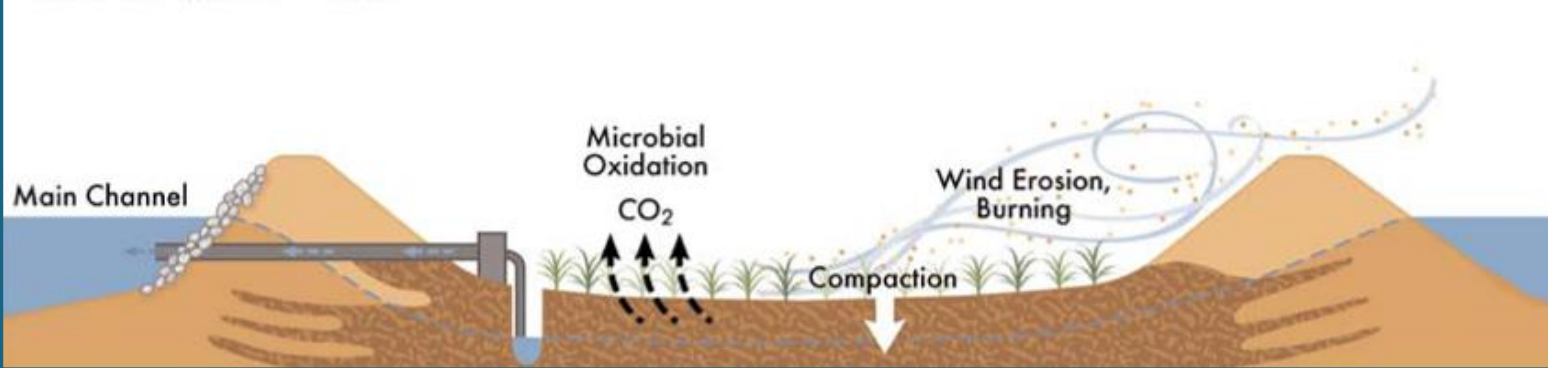
# Subsidence Process



## Pre-1880: Freshwater Tidal Marsh



## 1900's: Elevation Loss







# Delta Public Lands Strategy

- Planning Process and participation
- Key strategies and outcomes

## Delta Public Lands Strategy

Guidance for Conservation and Sustainability  
Across the West, Central, and Northeast Delta

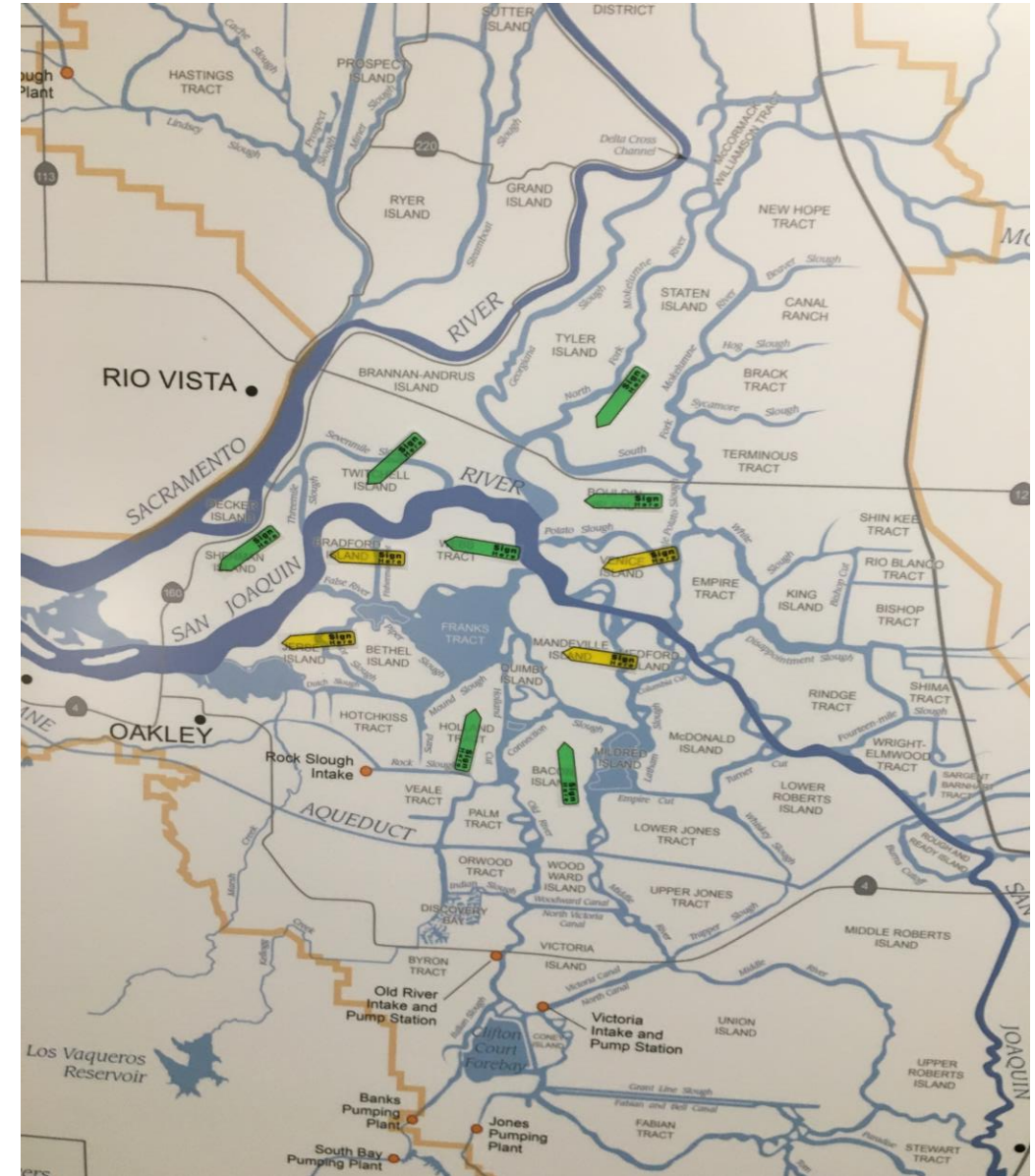
JANUARY 2019





# Delta Realities

- Possibly the last land owners





# Carbon Emissions Quantified

- Average of 15 metric tons of CO<sub>2</sub> per acre per year
- ~2,000,000 metric tons of CO<sub>2</sub> per year, Delta total
- ~500,000 vehicle equivalent
- Just over 1/4 of CA's total plant based agriculture carbon emissions



# Greenhouse Gas Emissions Reductions

- ACR Methodology approved in April 2017 – First 3rd party validation/verification in progress for 1,600 acres of wetland
- Working with public and private land owners to develop pilot projects
- Working with carbon financiers and investors to market resulting carbon credits
- Seeking funds to support project construction
- Ongoing discussions with ARB for eventual inclusion in the compliance program



# Market Potential

Estimated Annual Income per Acre	Voluntary	Compliance	Compliance
		Base Case	High Case
Offsets generated	15	15	15
Held in buffer account	<u>(4)</u>	<u>(4)</u>	<u>(4)</u>
Offsets for sale	11	11	11
Sale price (\$/offset)	\$7.00	\$19.00	\$30.00
Gross revenue per acre	\$77	\$209	\$330
Verification & registration costs	<u>-\$18</u>	<u>-\$26</u>	<u>-\$26</u>
Net revenue per acre	\$59	\$183	\$304



# Questions?

