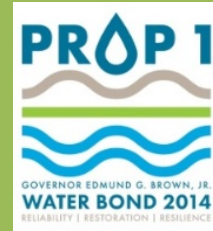


# Proposition 1 Project Fact Sheet



## Dutch Slough Tidal Marsh Restoration – Phase 2 Revegetation

**Grantee :** Reclamation District 2137

**Project Type:** Implementation

**Conservancy Funding:** \$2,900,000

**Project Number:** 2016-02

### Project Details

- Revegetation of Dutch Slough Tidal Marsh, that will include planting a mosaic of marsh, riparian, and upland plants.
- Will create 400 acres of tidal marsh, 50 of acres riparian woodland, 18 acres of native grassland, and 110 acres of subtidal open water (578 acres total restored).
- Multi-benefit project that not only will provide habitat to endangered species, but will also allow for shoreline access, and education and recreation opportunities for the public.
- This project is supported by: Friends of Marsh Creek Watershed, the City of Oakley, the Coastal Conservancy, the U.S. Environmental Protection Agency, and the Department of Water Resources.

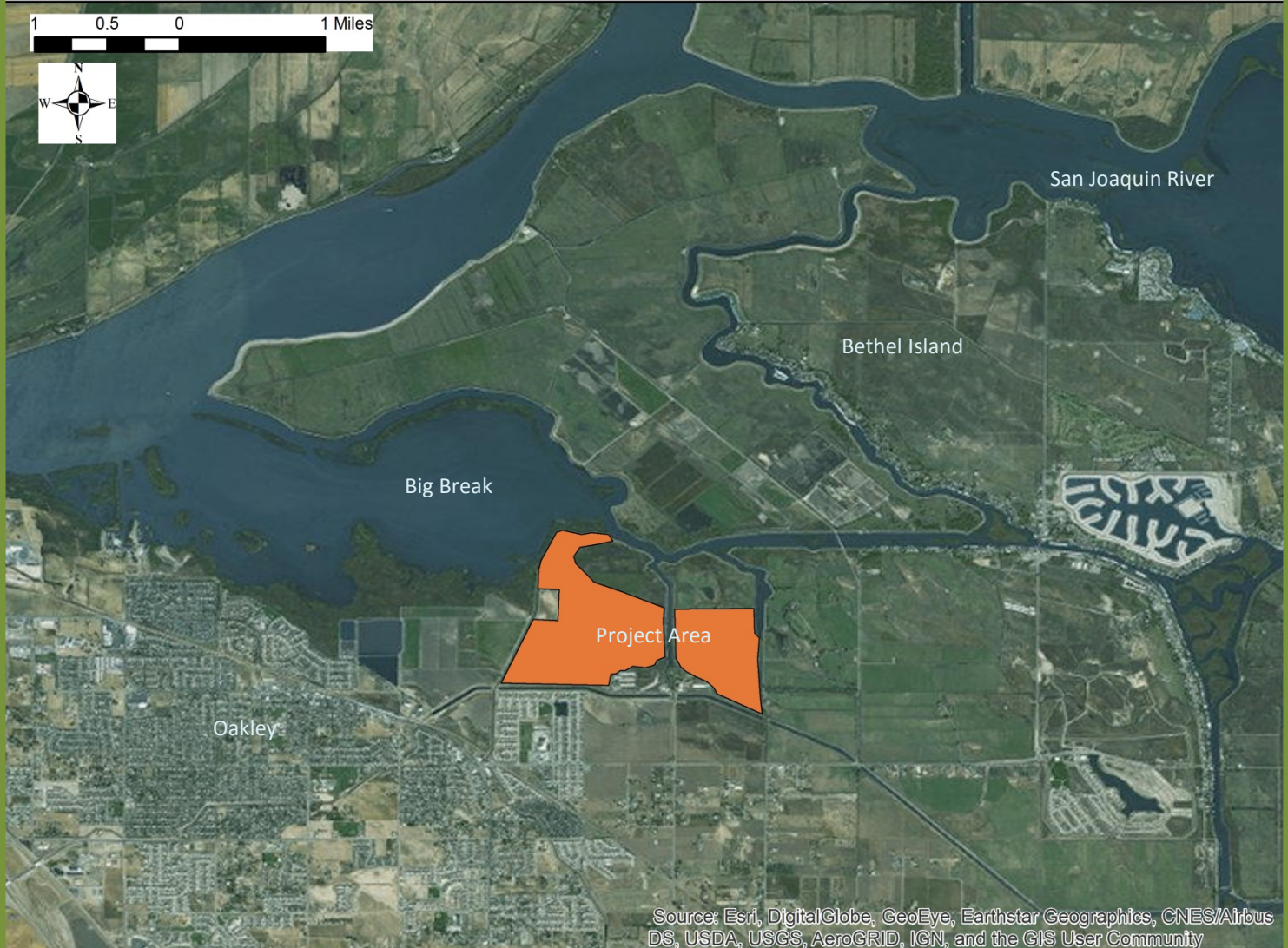


## Funding Partners

- Delta Conservancy \$2,900,000
- Department of Water Resources \$444,000
- Coastal Conservancy \$230,000
- US Environmental Protection Agency \$371,400
- US Fish and Wildlife Service \$100,000

## Project Timeline

- Establish on-site nurseries and develop planting plan – 2017 & 2018
- Maintain on-site nurseries -2018 & 2019
- Install, maintain, and monitor plantings - 2019 & 2020
- Monitor wildlife use – 2020 & 2021



## Location

The site is bounded by Marsh Creek (and Big Break) on the west and Dutch Slough on the north. It is located near the City of Oakley in Contra Costa County and is accessed via Sellers Avenue.

For up to date information about this project please visit [ecoatlas.org](http://ecoatlas.org)

**Sacramento-San Joaquin Delta Conservancy**  
**Ecosystem Restoration and Water Quality Grant Program**  
<http://deltaconservancy.ca.gov/prop-1/>  
[prop1grants@deltaconservancy.ca.gov](mailto:prop1grants@deltaconservancy.ca.gov)