



Who Lives in the Delta?

An overview of characteristics collected by the U.S. Census



Who Lives in the Delta?

An overview of characteristics collected by the U.S. Census

Lauren Joe (lauren.joe@cdph.ca.gov)
Delta MERP Community Stakeholder Meeting
September 30, 2015

Lauren Joe (lauren.joe@cdph.ca.gov)
Delta MERP Community Stakeholder Meeting
September 30, 2015

Lauren Joe (lauren.joe@cdph.ca.gov)
Delta MERP Community Stakeholder Meeting
September 30, 2015

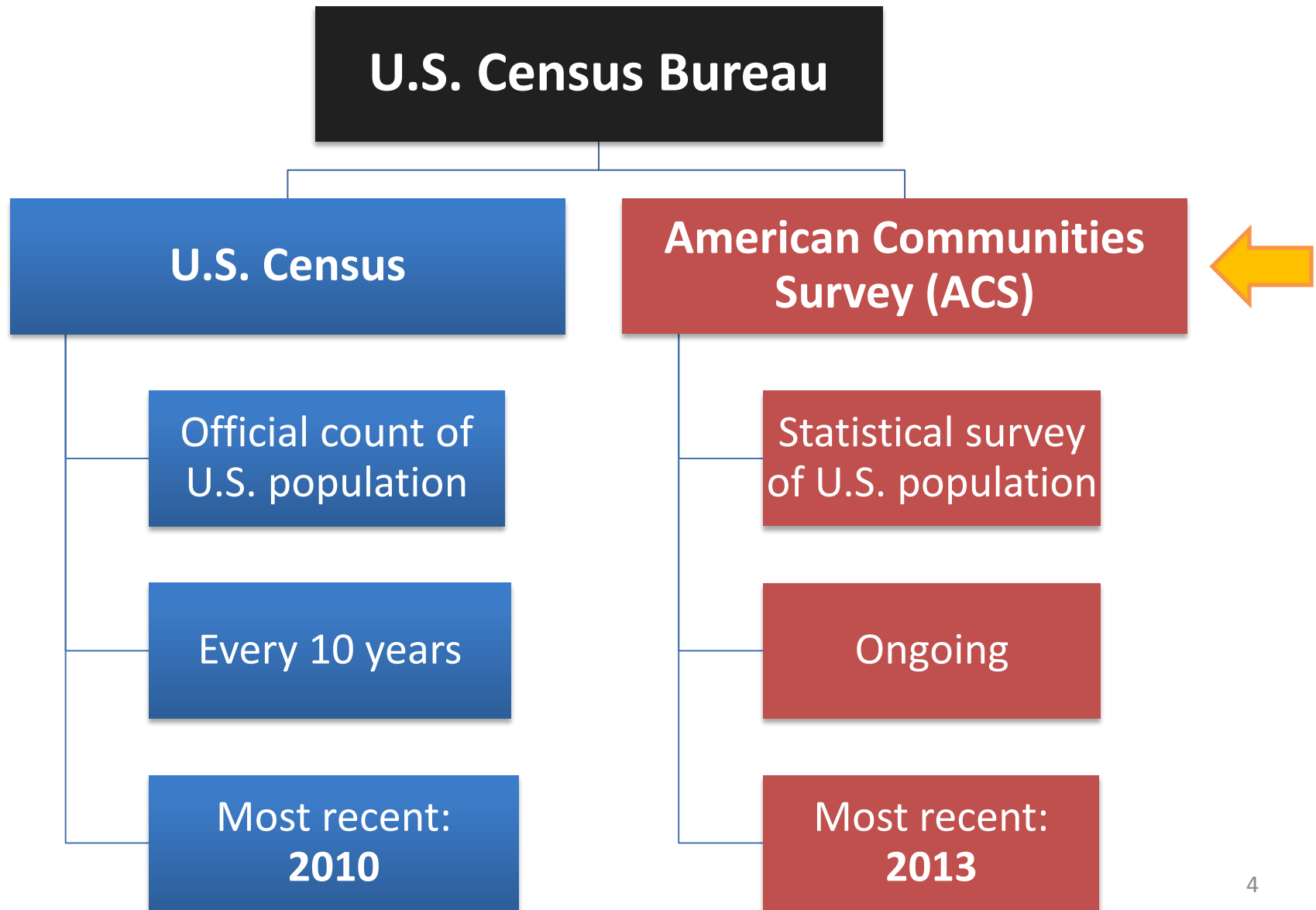
Introduction

- Why ask this question?
- What is the United States (U.S.) Census?
- Who lives in the Delta?
- What is next?

Why ask this question?

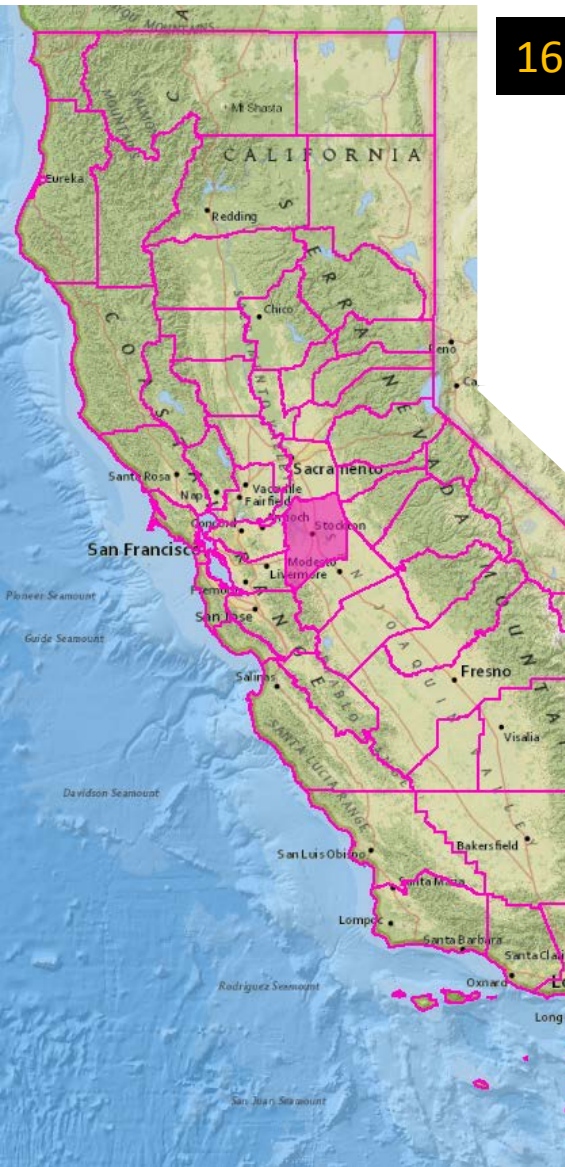
- Delta is a unique geographic region
 - Five different counties: Sacramento, Contra Costa, San Joaquin, Solano, Yolo
 - Rural and urban areas
- Common characteristics to summarize region not readily available
 - Sex, age, race/ethnicity, poverty, etc.
 - Know characteristics → Tailor Delta MERP activities

What is the U.S. Census?

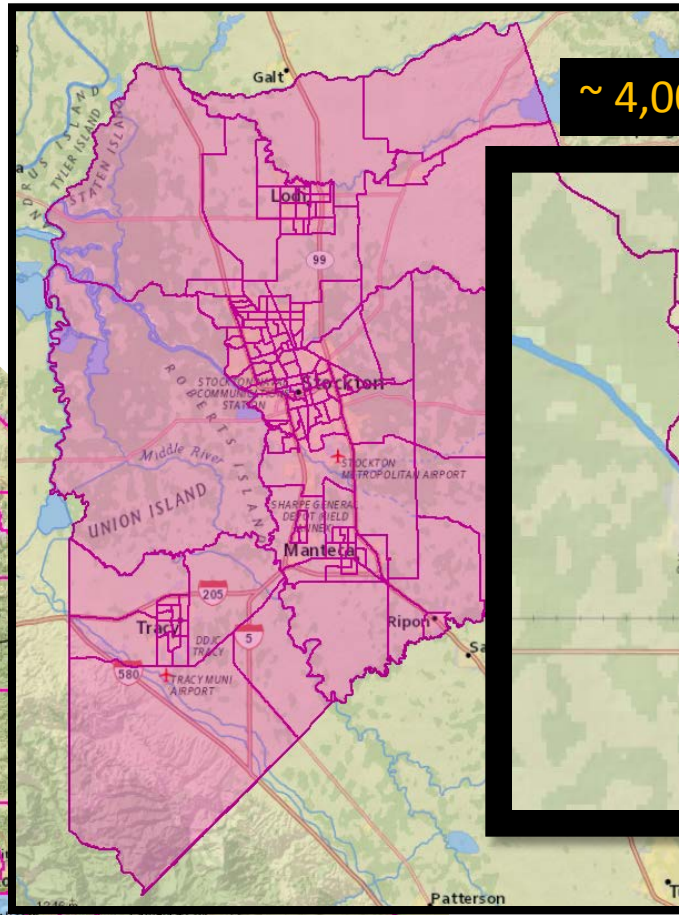


Geographic Units

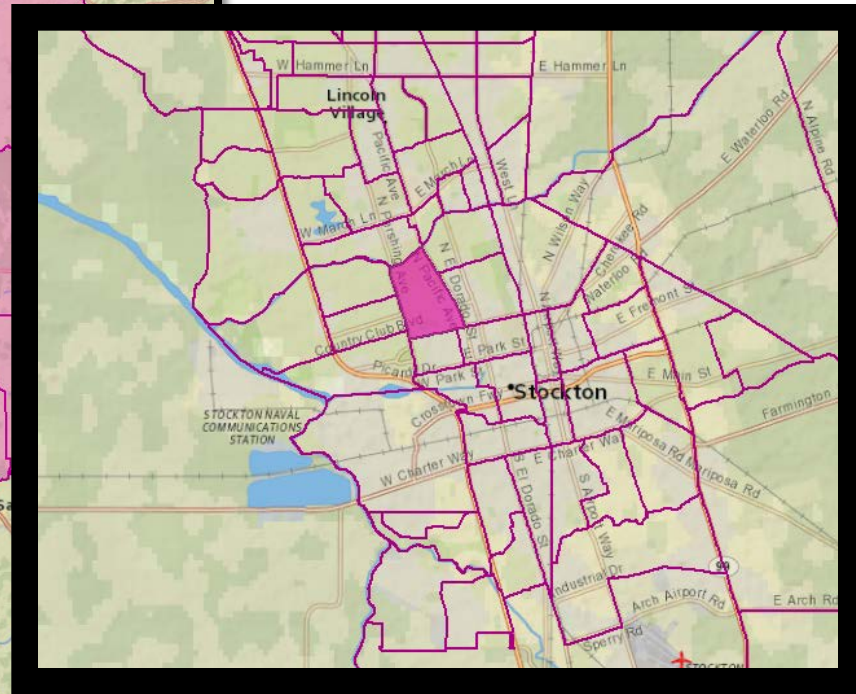
58 Counties in California



168 Census Tracts in San Joaquin County



~ 4,000 residents in a Census Tract



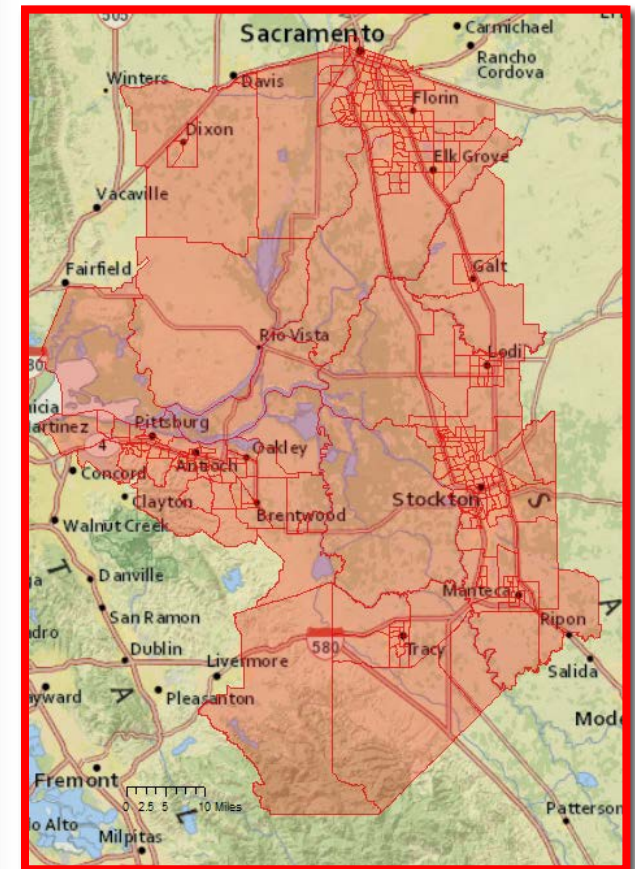
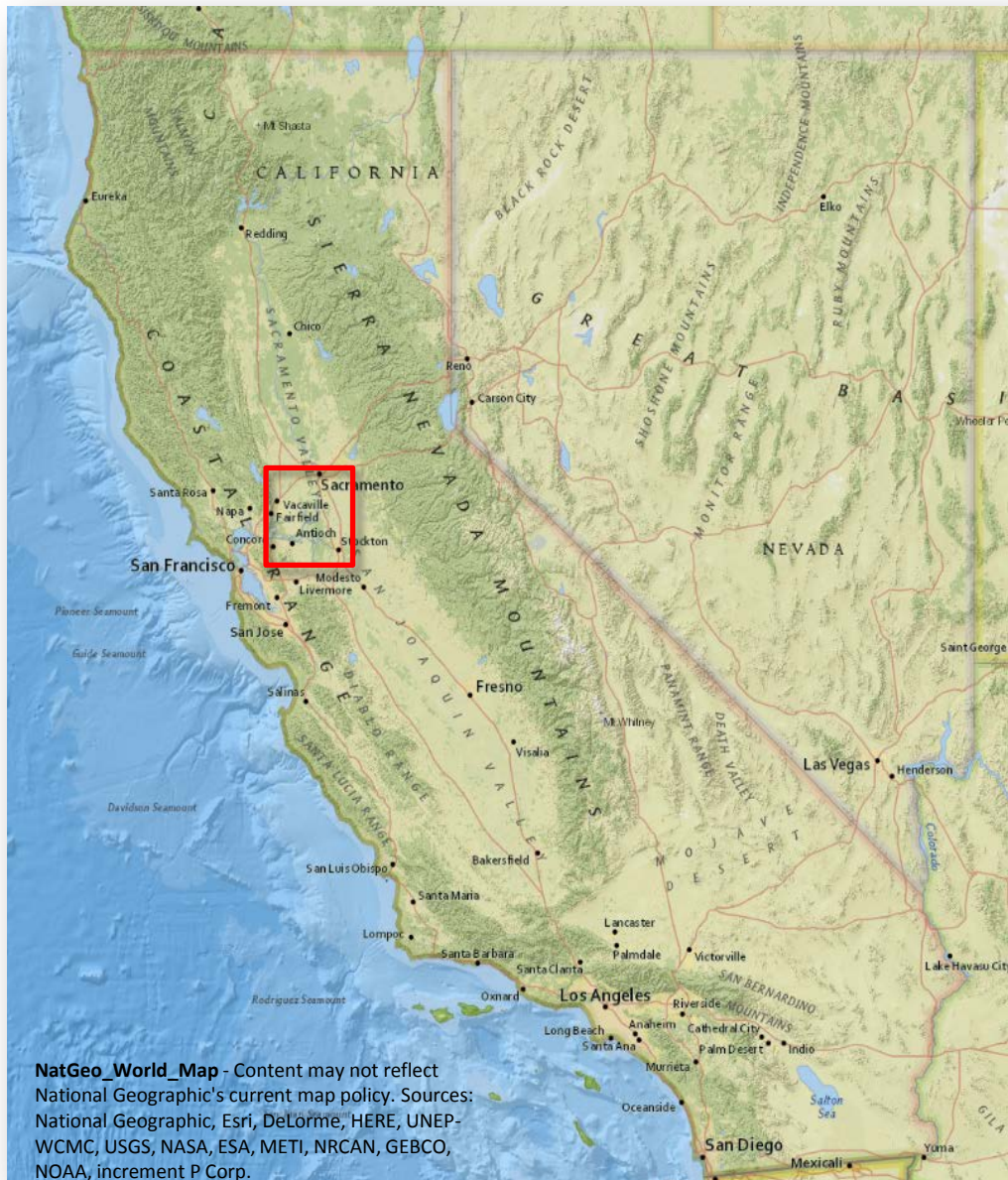


Characteristics in ACS

This presentation will cover:

- Age
- Sex
- Race/ethnicity
- Born in U.S.
- Language spoken at home
- Poverty status

Where is the Delta?



California Compared to Delta

	CA	Delta
Total population	37,659,181	1,651,007

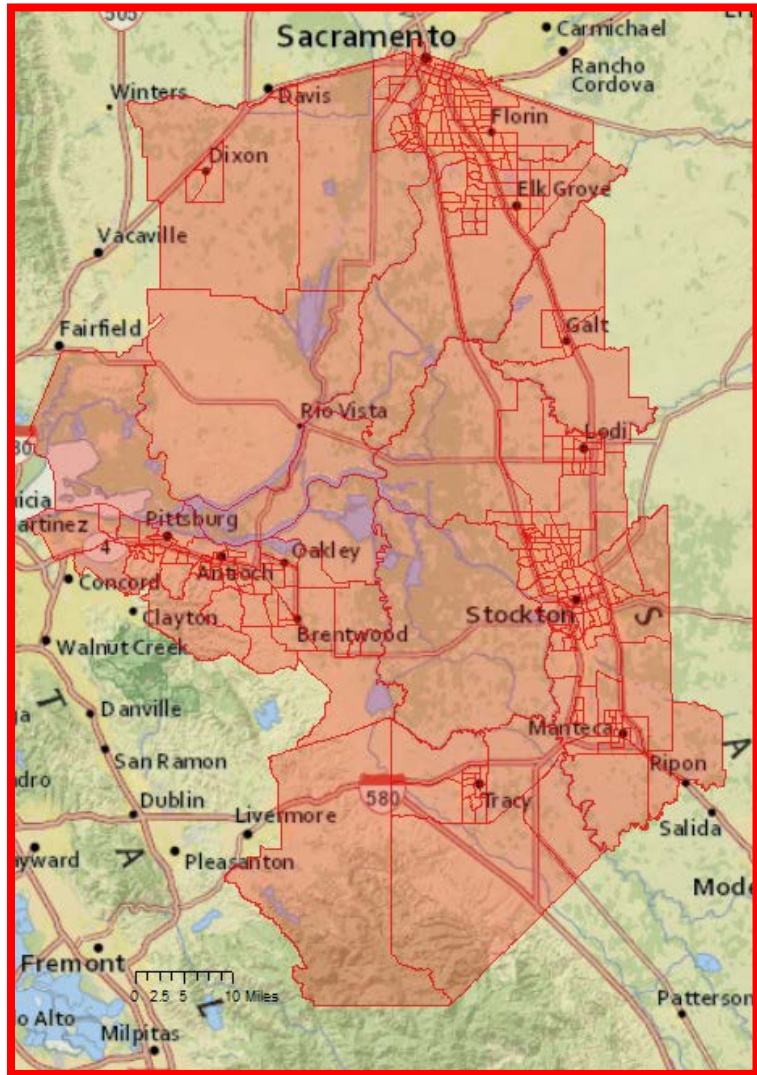
Age	CA	Delta
0 to 14 years	20.2%	22.8%
15 to 19 years	7.3%	8.0%
20 to 29	15.0%	14.3%
30 to 39	13.8%	13.3%
40 to 49	14.0%	13.7%
50 to 59	12.9%	12.5%
60 to 69	8.8%	8.2%
70 +	8.1%	7.2%

Race/ Ethnicity	CA	Delta
Hispanic/Latino	37.9%	33.0%
White	39.7%	35.4%
Black or African American	5.7%	9.9%
American Indian/Alaska Native	0.4%	0.4%
Asian	13.1%	16.2%
Native Hawaiian/ Other PI	0.4%	0.9%
Other	0.2%	0.2%
Multiple	2.6%	4.1%

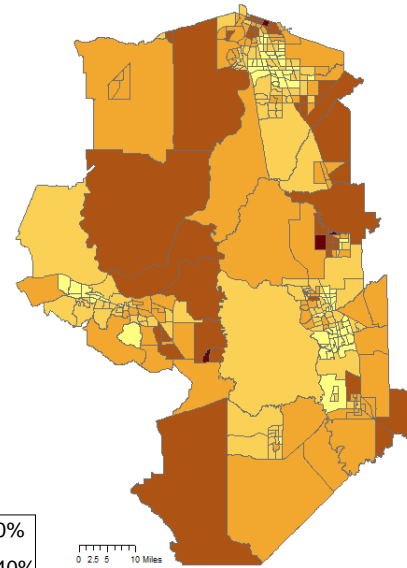
California Compared to Delta

	CA	Delta
Total population	37,659,181	1,651,007
Sex	CA	Delta
Male	49.7%	49.2%
Female	50.3%	50.8%
Where born?	CA	Delta
Born in US	73.0%	77.1%
Not born in US	27.0%	22.9%
Language spoken at home and ability to speak English	CA	Delta
Population 5 years and over	35,131,429	1,531,535
English only	56.3%	62.2%
Language other than English	43.7%	37.8%
Speak English less than "very well"	19.4%	20.8%
Poverty Status	CA	Delta
Population 5 years and over from whom poverty status is determined	34,428,217	1,623,364
Below poverty level	15.4%	17.7%
At or above poverty level	84.6%	82.3%

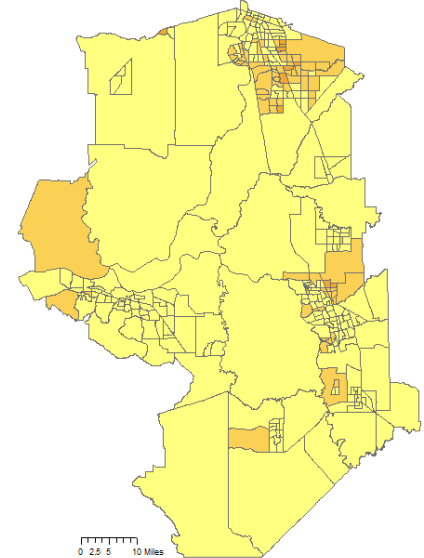
Race/Ethnicity



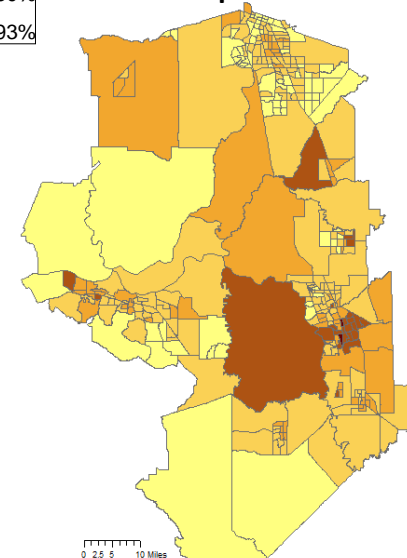
White



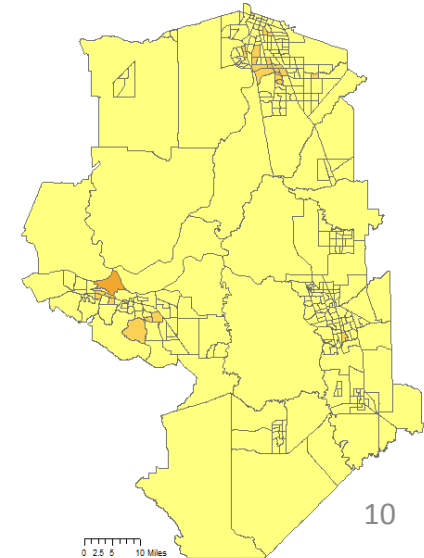
Asian



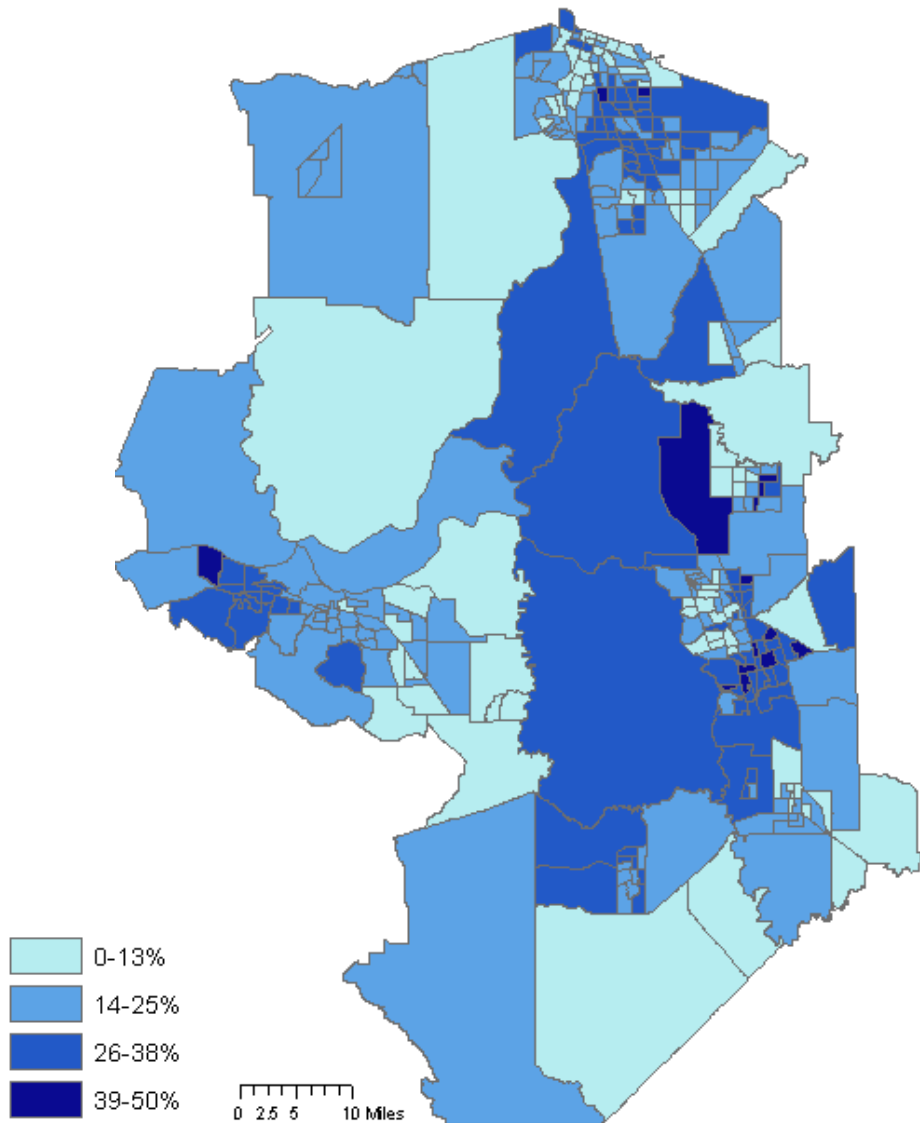
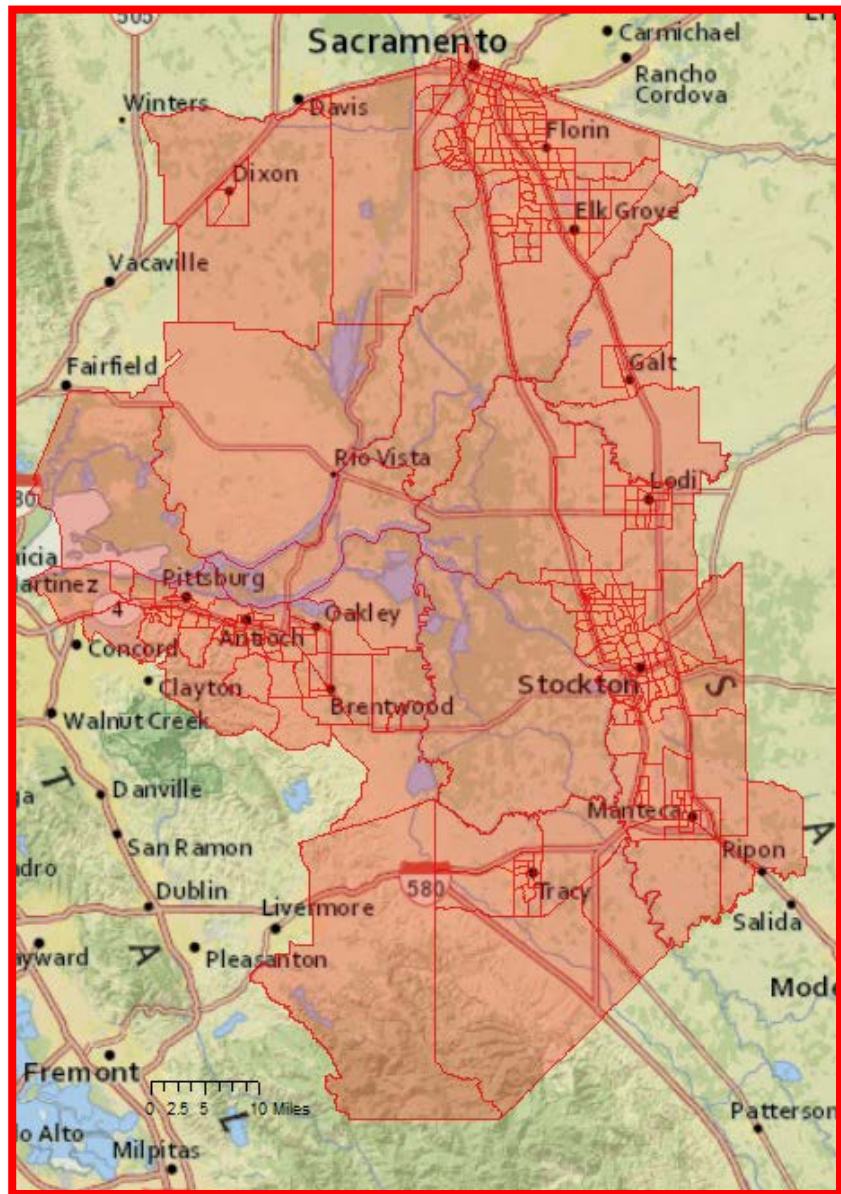
Hispanic



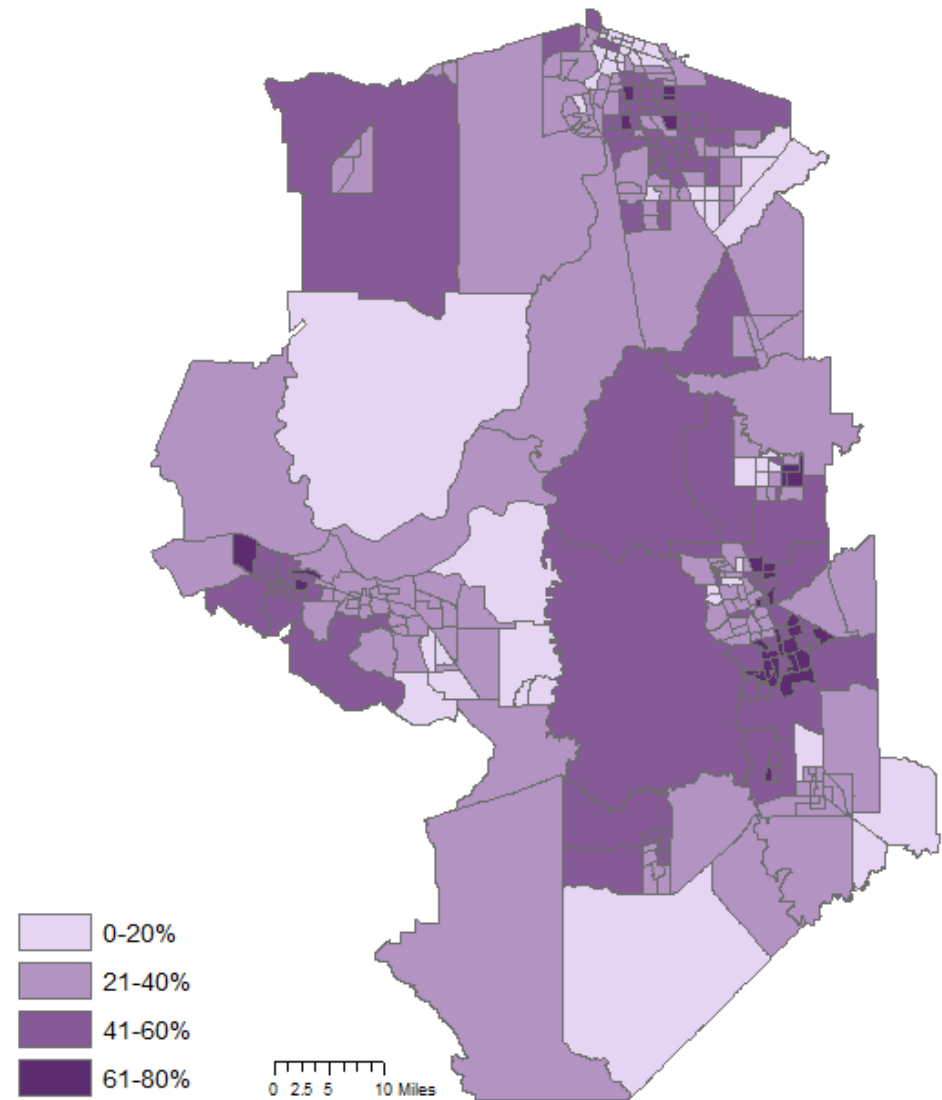
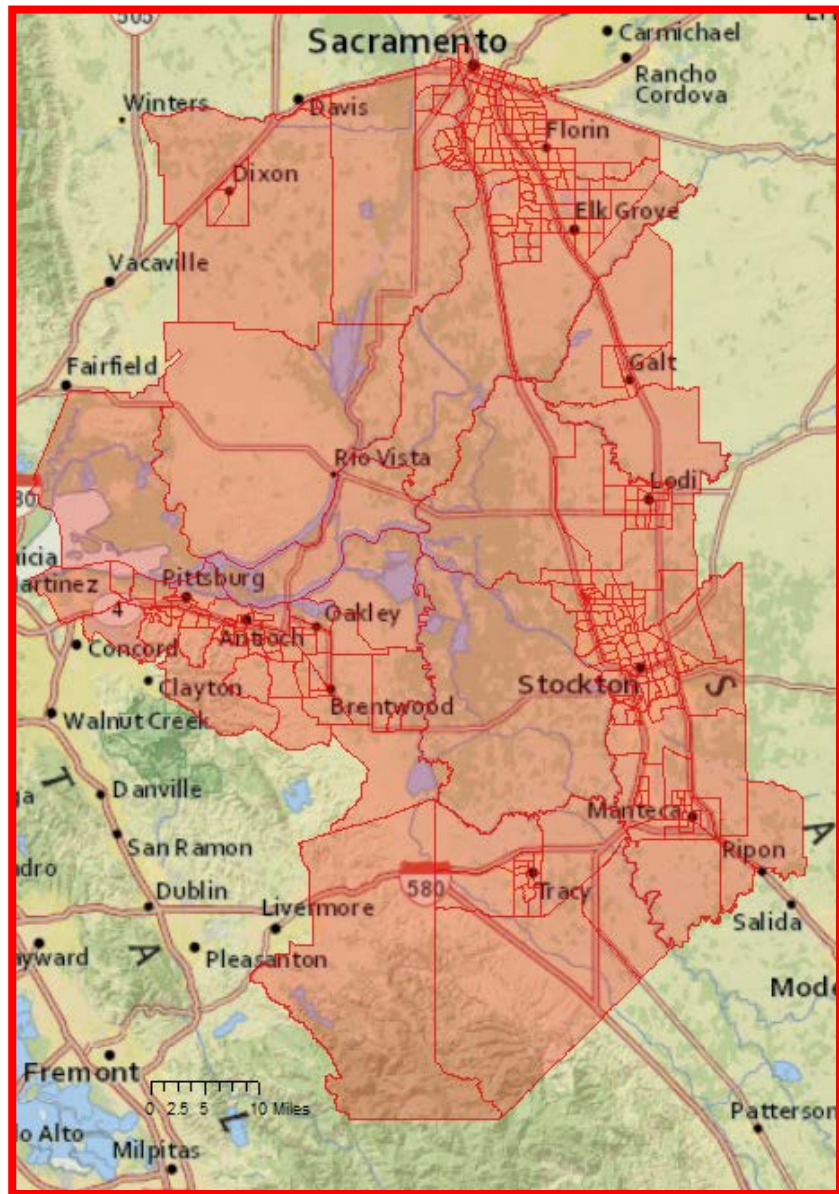
Black



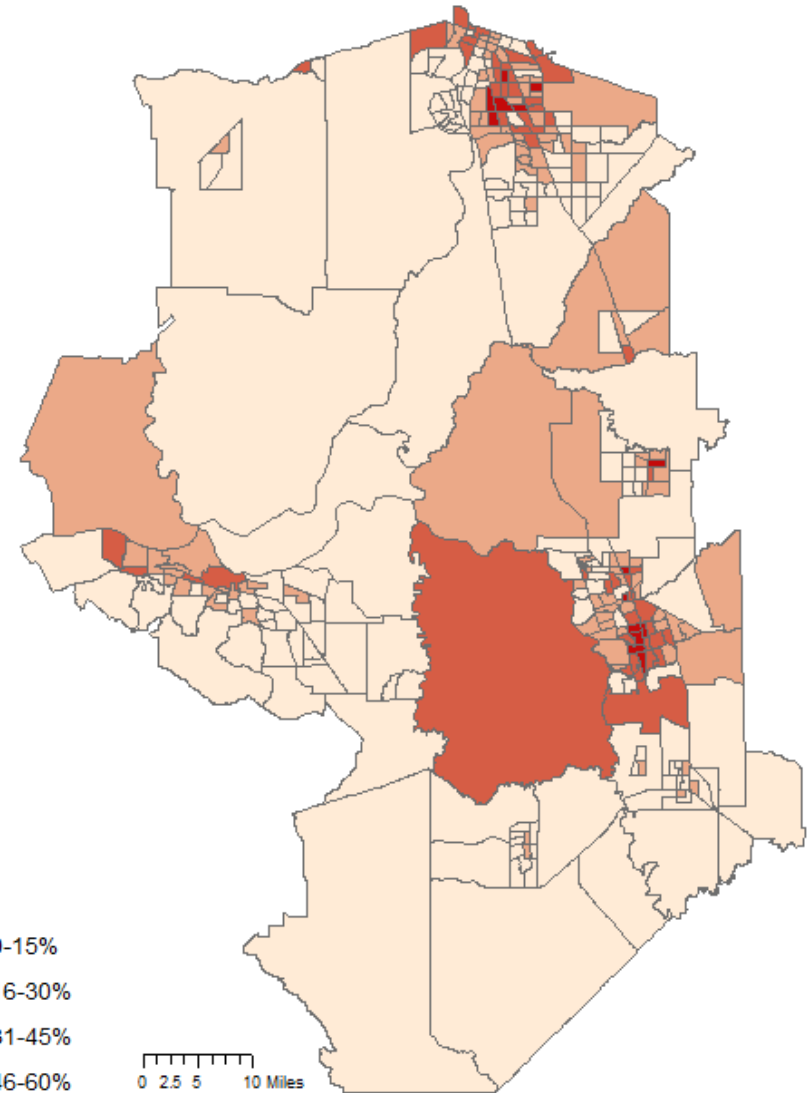
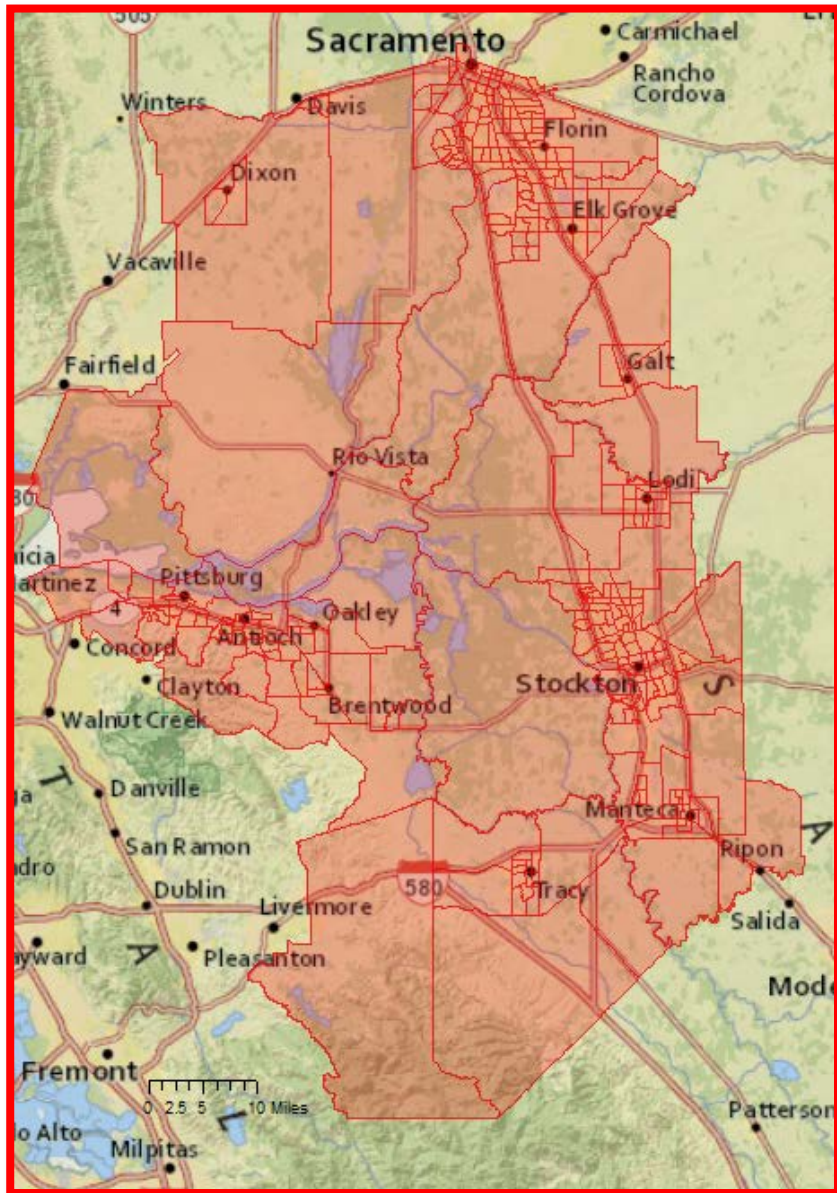
Born outside of U.S.



Speak Language other than English at Home



Below Poverty Line





Next Steps Discussion

Some notes from discussion that occurred during the CSG Meeting on 9/30/2015:

Suggestions to include:

- Maps showing percent women and children (vulnerable populations for mercury in fish)
- Comparison of Delta statistics to counties that intersect the Delta area
- More statistics on: specific languages spoken at home, Asian subgroups, other significant subgroups in the Delta

Considerations for the future:

- What format is most helpful for these results to be presented? For example, would a report online be informative and helpful to community stakeholders?
- We would like this to be an open and continuing dialogue about how these results could be used.
- Please contact lauren.loe@cdph.ca.gov or any Delta MERP staff

Full notes on the discussion and meeting as a whole are available on the Delta MFBP website:

Full notes on the discussion and meeting as a whole are available on the Delta MERP website:
<http://deltaconservancy.ca.gov/merp-meeting-materials>