

Community Outreach on Fish Contamination at Lake Nacimiento

Alyce Ujihara

California Department of Public Health

Delta Mercury Exposure Reduction Program

Community Stakeholder Group Meeting

May 20, 2015

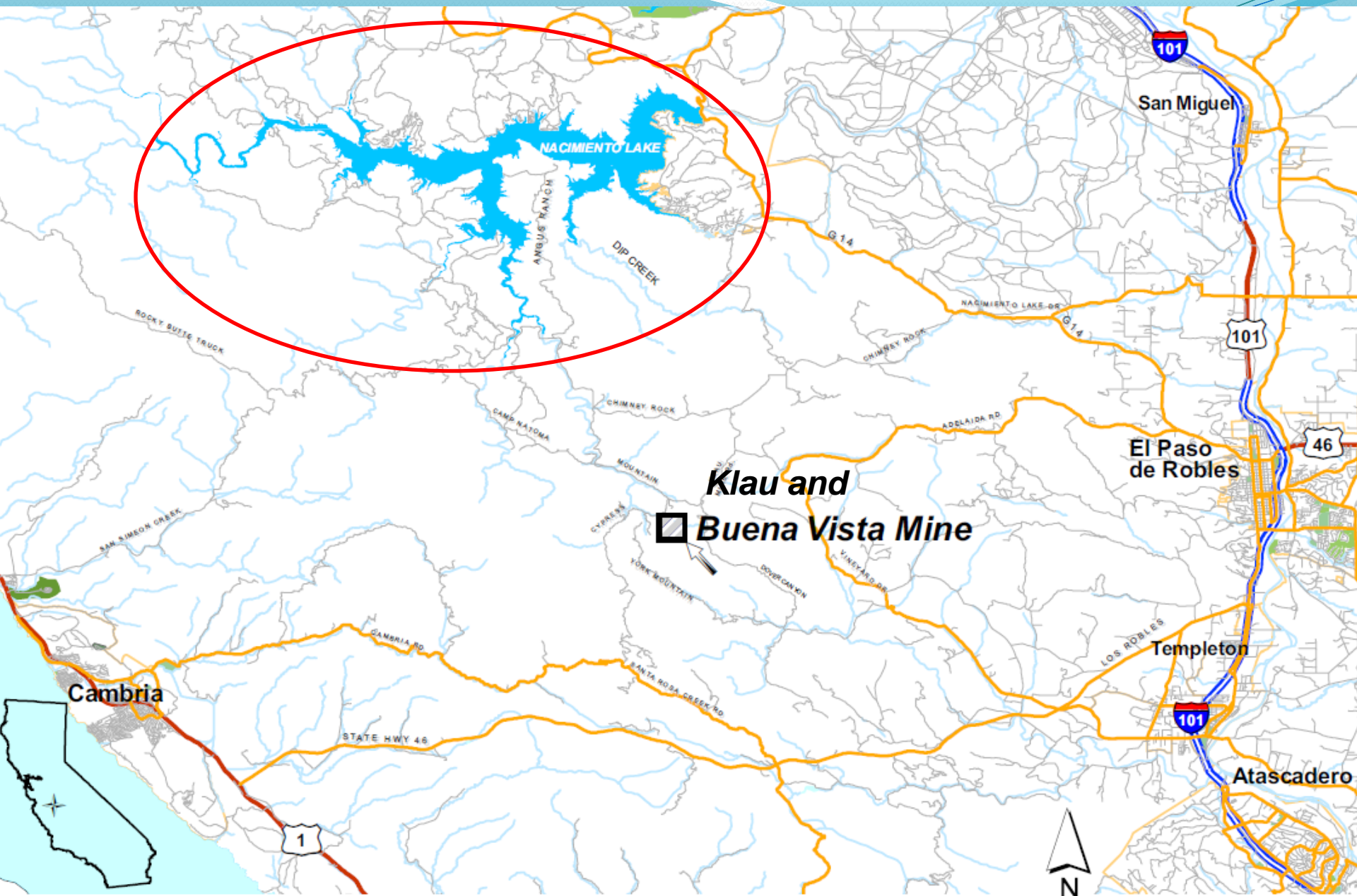


Lake
Nacimiento
(Lake 101)



Background

- Located downstream from two abandoned mercury mines (Klau and Buena Vista Mines)
- 1868-1970: mines operated and produced 6.4 million tons of elemental mercury
- 1990s
 - High mercury found in soil, sediments, water
 - High mercury found fish in Lake Nacimiento
 - Fish consumption advisory issued
- 2006: listed as a Superfund site



Activities at Lake Nacimiento

- Popular area for recreation: boating, fishing, water skiing, camping, vacation homes



Klau/Buena Vista Mine Superfund site

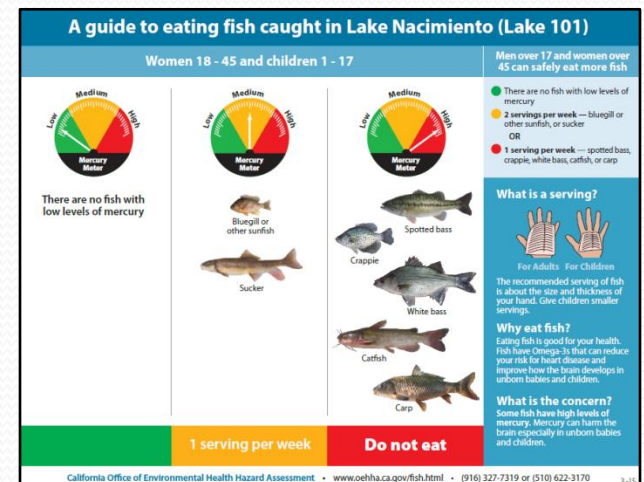
- US Environmental Protection Agency
 - Lead agency for assessing contamination and cleaning up site
- California Department of Public Health
 - Conducts a Public Health Assessment
 - Evaluate potential health impacts from site
 - Make recommendations and implement activities for reducing health impacts
 - Exposure to mercury from consumption of contaminate fish continues to be a health concern

Initial community outreach activities

- Outreach focused on lake residents and nearby populations
 - neighborhood associations
 - marinas
 - boating clubs
 - local agencies
 - elected officials
- Mostly English speakers and a few Spanish speakers

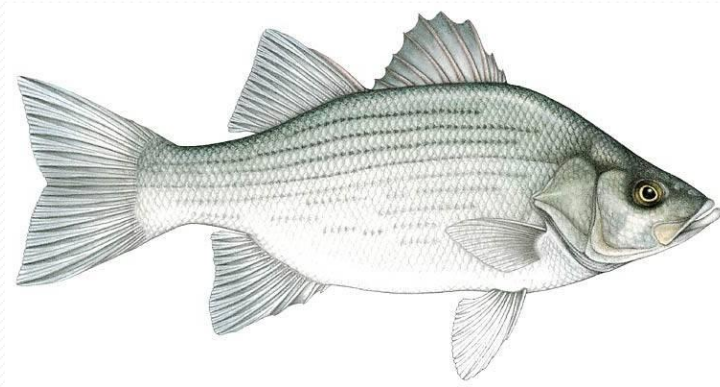
Initial community outreach activities

- Educational activities
 - Developed and posted signs
 - Developed and distributed educational materials
 - PSAs on Spanish radio
 - Training for community health workers (San Luis Obispo County)



Southeast Asian Fishermen

- Primarily Hmong, but also Lao, fished at Lake Naci
- Traveled from Central Valley
- Fished at night
- Liked to catch white bass



Current outreach activities

- Designed and tested new sign
- Supported community groups/Hmong youth to develop a video
- Hmong media

Lake Nacimiento/Lake 101

PROTECT YOUR FAMILY
PROTEJA A SU FAMILIA
For women 18-45 and children 1-17
Para mujeres entre 18 a 45 y niños entre 1 a 17

DO NOT EAT — HARMFUL CHEMICALS (MERCURY)
NO COMAN — QUIMICOS PELIGROSOS (MERCURIO)



Catfish
Bagre

Spotted Bass
Lobina Moteada

Carp
Carpa

White Bass
Lobino Blanca

Crappie
Mojarra

EAT ONLY 1 SERVING A WEEK
SOLO COMA 1 PORCIÓN A LA SEMANA



Bluegill and other sunfish
Mojarra Oreja Azul y otras especies de Pez Sol

Sucker
Matalote

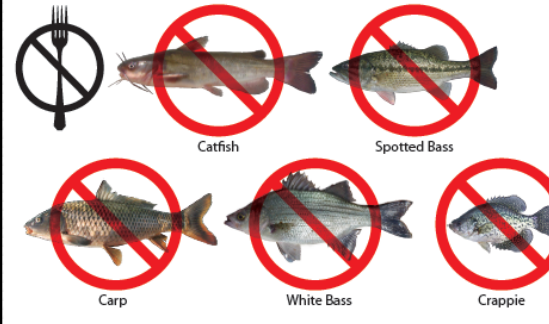
Women over age 45 and men over age 17 can safely eat more fish
Las mujeres mayores de 45 y los hombres mayores de 17 pueden comer más pescado sin riesgo

CDPH California Department of Public Health www.oehha.ca.gov/fish.html

Lake Nacimiento/Lake 101

TIV THAIV KOJ TSEV NEEG
ຄືມຄອງຄອບຄົວຂອງທ່ານ
Rau cov poj nlam 18-45 xyooos thlab cov me nyuam 1-17 xyoo
ສາລົບຜູ້ຍິງອາຍຸ 18-45 ປີ ແລະ ເດັກອາຍຸ 1-17 ປີ

TXHOB NOJ — MUAJ KUAB TSHUAJ PHOM SIJ HEEV (MERCURY)
ຢາກິນ - ສານເຄມີທີ່ເປັນອັນຕະລາຍ



Catfish

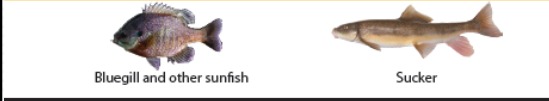
Spotted Bass

Carp

White Bass

Crappie

IB LIM PIAM/ASTHIV NOJ IB ZAUG XWB
ກິນພຽງ 1 ຄັ້ງຕໍ່ອາທິດ



Bluegill and other sunfish

Sucker

Cov poj nlam hnuv nyug tshaj 45 xyooos thlab cov txiv neej
hnuv nyug tshaj 17 xyoo noj nqalj ntse ntau zog los tau
ພວກຜູ້ຍິງອາຍຸເກີນກວ່າ 45 ປີ ແລະ ພວກຜູ້ຊາຍອາຍຸເກີນກວ່າ 17 ປີ ກິນປາໝາຍປອດພິພາກວ່າ

CDPH California Department of Public Health www.oehha.ca.gov/fish.html

Next steps

- Signs are being posted now
- Exploring additional outreach activities (e.g., distribution of the video, media, training for community health workers)

Questions?

