

Delta Environmental Data for the Understanding of a California Estuary

EXPAND THE SAN FRANCISCO BAY-DELTA REGIONAL DATA CENTER

- ➔ Work with agency, program, and scientist data providers collecting data in the Delta
- ➔ Harmonize data for improved interoperability
- ➔ Increase access to, and exchange of, high-quality environmental data

Project Phases

- Advance
to Data
Compliance/ Data Quality
Priority**

The diagram illustrates the CEDEX network structure. At the center is a circular logo for CEDEX, featuring a stylized globe with blue and green segments. Surrounding this central hub are eight oval-shaped nodes, each representing a partner organization. These nodes are connected to the central hub by green arrows pointing towards it, and to each other by a light blue circular line. The nodes are as follows:

- SAN FRANCISCO BAY-DELTA**: Includes the logo of the **SACRAMENTO SAN JOAQUIN DELTA CONSERVANCY** and the text **SFEI AQUATIC SCIENCE CENTER**.
- CENTRAL VALLEY**: Includes the logo of the **Central Valley REGIONAL DATA CENTER**.
- WQX**: Includes the logo for **WATER QUALITY EXCHANGER**.
- Ma Water Quality**: Includes the logo for **Ma Water Quality**.
- SOUTHERN CALIFORNIA**: Includes the logo for **ECCWRP**.
- CENTRAL COAST**: Includes the logo for **CENTRAL COAST AQUATIC SCIENCE CENTER**.
- NORTHERN COASTAL AND SIERRA**: Includes the logo for **SFEI AQUATIC SCIENCE CENTER**.
- SAN FRANCISCO BAY-DELTA**: Includes the logo of the **SACRAMENTO SAN JOAQUIN DELTA CONSERVANCY** and the text **SFEI AQUATIC SCIENCE CENTER**.

- 
- CALIFORNIA
Water Boards
LOCAL WATER PROBLEMS TO SOLVE... TOGETHER

CONTACT: shakoora.azimi-gaylon@deltaconservancy.ca.gov

DEDUCE

DATA COMPLIANCE/DATA QUALITY

- ➔ Check priority data for completeness based on CEDEN's minimum data elements and the QAPP data quality objectives, or ensure standardized procedures were used
- ➔ Review eligible datasets for other criteria, such as filling an important data gap or length of dataset

BENEFITS OF A BAY-DELTA RDC



Generate charts and filter by area of interest – cd3.sfei.org



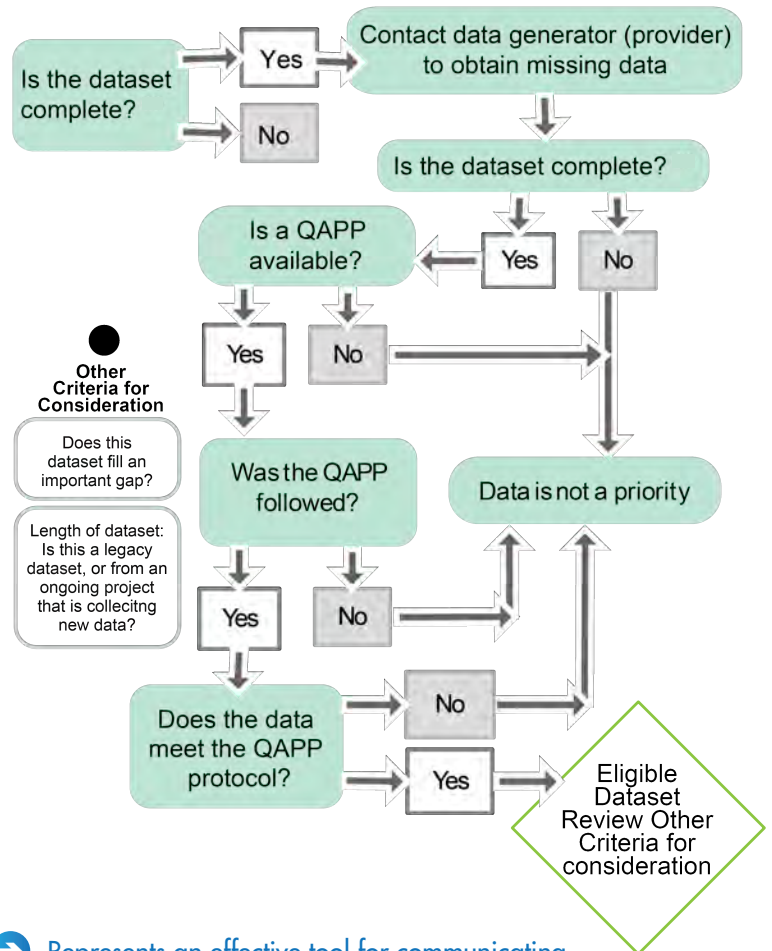
Access water quality data across the state – ceden.org



Aggregate multiple data sources at the landscape scale – ecoatlas.org



Explore data summarized by theme-based questions - mywaterquality.ca.gov



- ➔ Represents an effective tool for communicating highly credible and relevant science needed to guide comprehensive policy solutions
- ➔ Uses visualization tools to share data from the Delta, and accelerates the discovery and communication of new information
- ➔ Provides a central source for Delta water quality data that meets stringent state and EPA standards
- ➔ Supports management actions to balance the coequal goals of a more reliable water supply and protecting the Delta ecosystem

RELATED PROJECTS

Several other projects will also improve the accessibility of data and information in the Delta by:

- ➔ expanding EcoAtlas to track and display habitat restoration projects in the Delta
- ➔ integrating new visualization features for sharing data in EcoAtlas
- ➔ coordinating a monitoring and data management strategy for the Delta RMP
- ➔ developing watershed indicators by the Delta Watershed Initiative Network
- ➔ displaying interactive factsheets for TMDLs in the Delta on the Estuaries Portal